



HITACHI
S10 α SERIES

SOFTWARE MANUAL
OPERATION

CPMS LOADING For Windows[®]

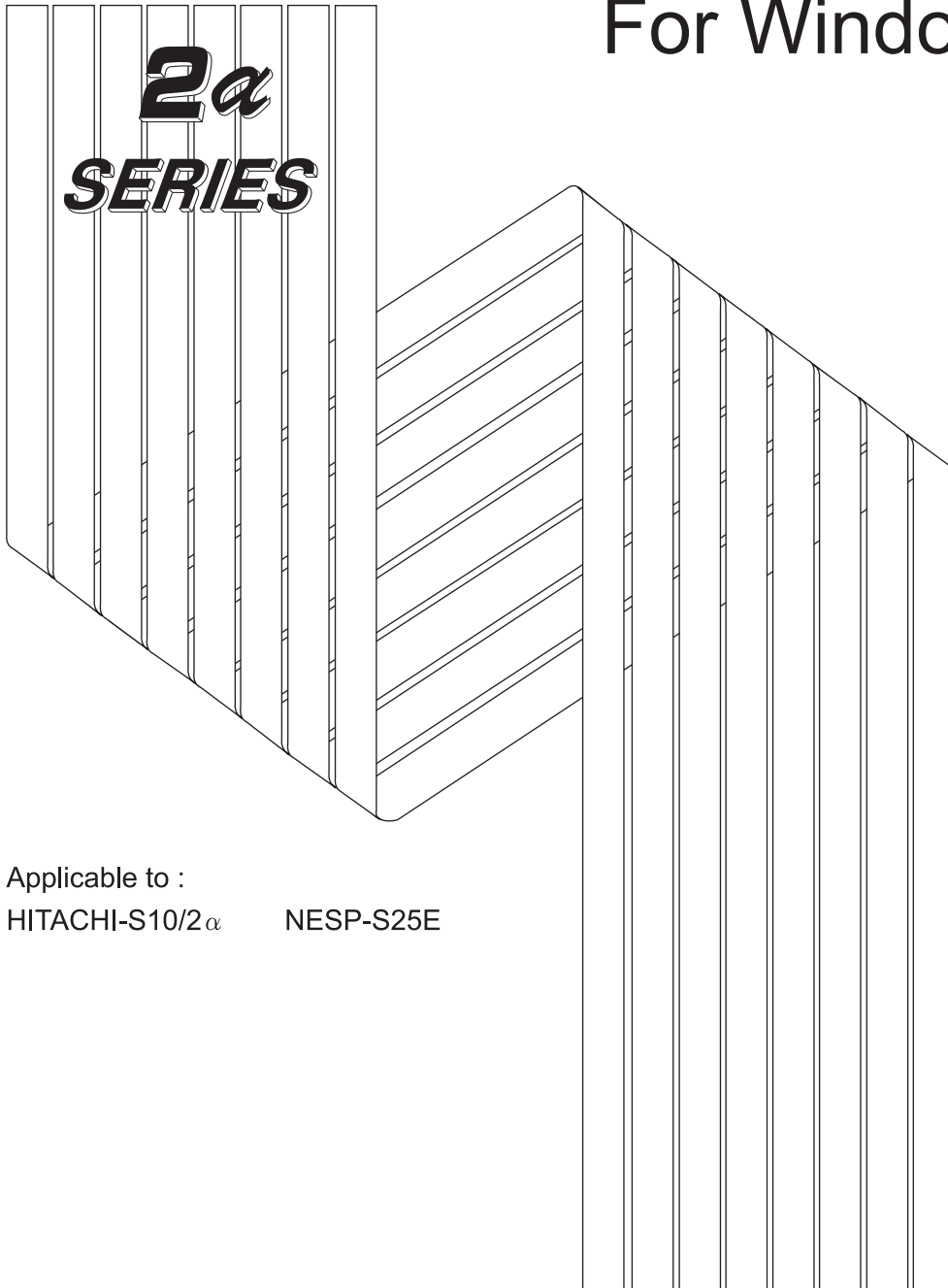
2 α
SERIES

Applicable to :
HITACHI-S10/2 α NESP-S25E



SOFTWARE MANUAL
OPERATION

CPMS LOADING For Windows[®]



Applicable to :
HITACHI-S10/2 α NESP-S25E

HITACHI

NOTE

All information in this manual is based on the latest product information available at the time of printing. Hitachi has reviewed the accuracy of this manual, but assumes no responsibility for any omissions or errors which may appear. The design of the product is under constant review and, while every effort is made to keep this manual up to date, the right is reserved to change specifications and equipment at any time without prior notice.

PROHIBITION

These products should not be used for medical, power supply, nuclear, water supply, drainage plants, traffic control, military, space, nor disaster prevention equipment.

Diversion and/or resale of these products without this manual is prohibited.

Reproduction of the contents of this manual in whole or in part, without written permission of Hitachi, is prohibited.

TRADEMARKS

HITACHI-S10/2 α , S10/4 α and PSE α are registered trademarks of Hitachi, Ltd.

FIRST EDITION, AUGUST, 1998, SAE - 3 - 123 (A) (out of print)
SECOND EDITION, OCTOBER, 2000, SAE - 3 - 123 (C) (out of print)
THIRD EDITION, SEPTEMBER, 2003, SAE - 3 - 123 (D)
All Rights Reserved, Copyright © 1998, 2003, Hitachi, Ltd.

LIMITED WARRANTY

Hitachi, Ltd., warrants its products to be manufactured in accordance with published specifications and free from defects in materials and/or workmanship.

Hitachi, Ltd., warrants its products against defects in parts and workmanship for one full year from date of purchase.

HITACHI, LTD., MAKES NO WARRANTIES, EITHER EXPRESS OR IMPLIED EXCEPT AS PROVIDED HEREIN, INCLUDING WITHOUT LIMITATION THEREOF, WARRANTIES AS TO MARKETABILITY FOR A PARTICULAR PURPOSE OF USE, OR AGAINST INFRINGEMENT OF ANY PATENT. IN NO EVENT SHALL HITACHI BE LIABLE FOR ANY DIRECT, INCIDENTAL OR CONSEQUENTIAL DAMAGES OF ANY NATURE, OR COSTS, CHARGES, LOSSES OR EXPENSES RESULTING FROM ANY DEFECTIVE PRODUCT OR THE USE OF ANY PRODUCT.

SOFTWARE UP-TO DATE POLICY

Hitachi, Ltd., constantly reviews its software so as to incorporate the latest technology. Hitachi reserves the right to make changes to any software to improve reliability, function, or design. Hitachi cannot be held responsible for any errors in its software.



SAFETY PRECAUTIONS

- Read this manual thoroughly and follow all the safety precautions and instructions given in this manual before operations such as system configuration and program creation.
- Keep this manual handy so that you can refer to it any time you want.
- If you have any question concerning any part of this manual, contact your nearest Hitachi branch office or service engineer.
- Hitachi will not be responsible for any accident or failure resulting from your operation in any manner not described in this manual.
- Hitachi will not be responsible for any accident or failure resulting from modification of software provided by Hitachi.
- Hitachi will not be responsible for reliability of software not provided by Hitachi.
- Make it a rule to back up every file. Any trouble on the file unit, power failure during file access or incorrect operation may destroy some of the files you have stored. To prevent data destruction and loss, make file backup a routine task.
- Furnish protective circuits externally and make a system design in a way that ensures safety in system operations and provides adequate safeguards to prevent personal injury and death and serious property damage even if the product should become faulty or malfunction or if an employed program is defective.
- If an emergency stop circuit, interlock circuit, or similar circuit is to be formulated, it must be positioned external to the programmable controller. If you do not observe this precaution, equipment damage or accident may occur when the programmable controller becomes defective.
- Before changing the program, generating a forced output, or performing the RUN, STOP, or like procedure during an operation, thoroughly verify the safety because the use of an incorrect procedure may cause equipment damage or other accident.



“RUN/STOP” SWITCH CAUTION

The “RUN/STOP” switch only stops execution of the ladder logic program or HI-FLOW program. Digital and analog outputs are left in the active state when execution stops, unless the optional rungs described in the CPU manual have been added. The “RUN/STOP” switch does not affect the operation of C-language or FA-BASIC language programs. Outputs can still be produced in response to C-language or FA-BASIC programs, or by the action of programmers typing in commands in these languages, while the “RUN/STOP” switch is in the “STOP” position.

DO NOT DEPEND ON THE STOP SWITCH TO STOP MOVING PARTS OR TO PREVENT UNEXPECTED MOTION OR ENERGIZATION. USE HARDWIRED SAFETY DISCONNECT AND LOCK OUT POWER AND CONTROL VOLTAGES BEFORE WORKING ON ELECTRICAL CIRCUITS OR PARTS THAT CAN MOVE.

PREFACE

We greatly appreciate your purchase of this CPMS loading system.

The CPMS is the operating system (Compact PMS) for HITACHI-S10/2 α machines.
The CPMS loading system runs on a personal computer, and transfers the CPMS to programmable controllers (PCs).

This manual describes the operation of the CPMS loading system.

This manual is applicable to the following system versions.

System name/version
CPMS LOADING SYSTEM For Windows® 07-04

System versions 05-00 and earlier do not support the Microsoft® Windows® 98 operating system. They support the Microsoft® Windows® 95 operating system only.

For the Compact PMS, refer to the following manual, which is supplied along with the module:

<Related manual>

SOFTWARE MANUAL GENERAL DESCRIPTION & MACROS COMPACT PMS V5
(Manual number SAE-3-201)

See the following list when you use the NESP
(Nissan Electronic Sequence Processor) series.

【HITACHI-S10α series】	【NESP series】
HITACHI-S10/2 α NESP-S25E

<Trademarks>

- Microsoft® Windows® operating system, Microsoft® Windows® 95 operating system, Microsoft® Windows® 98 operating system, Microsoft® Windows® 2000 operating system, Microsoft® Windows® XP operating system are registered trademarks of Microsoft Corporation in the United States and/or other countries.
- Ethernet is a registered trademark of Xerox Corp.

Other product names written in this manual are the trademarks of each manufacturer.

Systems Supported by Windows® 2000 and Windows® XP

The systems supported by Microsoft® Windows® 2000 operating system (hereafter abbreviated as Windows® 2000) and Microsoft® Windows® XP operating system (hereafter abbreviated as Windows® XP) are shown in the following table.

Systems of earlier versions than those shown in the following table are not supported by Windows® 2000 and Windows® XP but supported by only Microsoft® Windows® 95 operating system (hereafter abbreviated as Windows® 95) and Microsoft® Windows® 98 operating system (hereafter abbreviated as Windows® 98). (The system names in the following table are hereafter abbreviated as each system.)

<Table of Systems Supported by Windows® 2000 and Windows® XP>

No.	System name	Type	Version	Windows® 2000	Windows® XP
1	S10Tools SYSTEM	S-7890-01	07-05	√	√
2	LADDER CHART SYSTEM	S-7890-02	07-05	√	√
3	HI-FLOW SYSTEM	S-7890-03	07-02	√	√
4	CPMS LOADING SYSTEM	S-7890-04	07-04	√	√
5	CPMSE LOADING SYSTEM	S-7890-05	07-04	√	√
6	CPMS DEBUGGER SYSTEM	S-7890-06	07-02	√	√
7	CPMSE DEBUGGER SYSTEM	S-7890-07	07-02	√	√
8	GP-IB LOADING SYSTEM	S-7890-08	07-01	√	√
9	BACKUP RESTORE SYSTEM	S-7890-09	08-01	√	√
10	RPDP/S10 SYSTEM	S-7891-10	03-03	√ (*2)	ns (*1)
11	NX/Tools-S10 SYSTEM	S-7890-13	07-02	√	√
12	4α LADDER CHART SYSTEM	S-7890-17	07-05	√	√
13	4αH LADDER CHART SYSTEM	S-7890-18	07-05	√	√
14	LADDER COMMENT CONVERTER SYS	S-7890-19	06-01	√	√
15	HIGH SPEED REMOTE I/O SYSTEM	S-7890-21	07-01	√	√
16	CPU LINK SYSTEM	S-7890-22	07-01	√	√
17	4ch ANALOG PULSE COUNTER SYS	S-7890-23	07-01	√	√
18	EXTERNAL SERIAL LINK SYSTEM	S-7890-24	07-02	√	√
19	S10ET LINK SYSTEM	S-7890-25	07-02	√	√
20	J.NET SYSTEM	S-7890-27	07-02	√	√
21	OD.RING/SD.LINK SYSTEM	S-7890-28	07-03	√	√
22	ET.NET SYSTEM	S-7890-29	07-01	√	√
23	FL.NET SYSTEM	S-7890-30	07-03	√	√
24	D.NET SYSTEM	S-7890-31	07-04	√	√
25	LADDER CHART MONITOR SYSTEM	S-7890-34	07-04	√	√
26	HI-FLOW MONITOR SYSTEM	S-7890-35	07-01	√	√
27	IR.LINK SYSTEM	S-7890-36	07-02	√	√
28	Crossing C compiler (manufactured by Mentor graphics company)	MCP68K	5.3	√ (*2)	ns (*1)

√: Supported ns: Not supported

(*1) Crossing C compiler (No.28) is not supported by Windows® XP. Use it on Windows® 2000.

(*2) Crossing C compiler (No.28) must be a version supported by Windows® 2000 (later than version 5.3) as a premise.

<Definitions of Terms>

- N coil: A ladder program converted into a form that can be run on the PCs by pasting a symbol on the sheet displayed on a PC.
- Process: A HI-FLOW program converted into a form that can be run on the PCs by pasting a symbol on the sheet displayed on a PC.
- Compile: To convert an application program such as a ladder chart and HI-FLOW into a form (N coil, process, etc.) that can be run on the PCs.
- Build: To compile only a corrected application program.
- Rebuild: To compile every existing application program.
- Sheet: Paper to prepare an application program of ladder chart and HI-FLOW, etc. This paper is controlled on a PC.
- PCs: An abbreviation of Programmable Controllers.
This is a general term for PLC such as the S10 α and S10mini series.
- PLC: An abbreviation of Programmable Logic Controller.
This is an industrial electronic device to exert sequence control, having an incorporated program.
The S10 α and S10mini series come under this PLC.

<Note for storage capacity calculations>

- Memory capacities and requirements, file sizes and storage requirements, etc. must be calculated according to the formula 2^n . The following examples show the results of such calculations by 2^n (to the right of the equals signs).
1 KB (kilobyte) = 1024 bytes
1 MB (megabyte) = 1,048,576 bytes
1 GB (gigabyte) = 1,073,741,824 bytes
- As for disk capacities, they must be calculated using the formula 10^n . Listed below are the results of calculating the above example capacities using 10^n in place of 2^n .
1 KB (kilobyte) = 1000 bytes
1 MB (megabyte) = 1000^2 bytes
1 GB (gigabyte) = 1000^3 bytes

CONTENTS

1	BEFORE USE.....	1
1.1	System Overview	2
1.2	Hardware and Software Requirements.....	2
2	INSTALLATION.....	5
2.1	Installing the System	6
2.2	Uninstalling the System	7
2.3	Starting Up the System.....	8
2.4	Terminating the System	9
3	COMMANDS.....	11
3.1	Command System	12
3.2	Transferring CPMS	12

1 BEFORE USE

1 BEFORE USE

This manual is intended for personal computer programmers using the Windows®.

1.1 System Overview

The CPMS loading system for Windows® (hereinafter simply referred to as the CPMS loading system) transfers the CPMS (Compact PMS) for HITACHI-S10/2α machines to the PCs through operations similar to those used by Windows application users.

1.2 Hardware and Software Requirements

Using each system requires the following hardware and software.

<Personal Computers (hereafter abbreviated as PC)>

Item \ OS	Windows® 95 (*1)	Windows® 2000 (*1)	Windows® XP (*1)
	Windows® 98 (*1)		(*2)
CPU	Pentium 133 MHz or more		Pentium 300 MHz or more
Memory (RAM)	32 MB or more	64 MB or more	128 MB or more
Free hard disk capacity (*3)	20 MB or more/system (However, 10 MB or more/system for OS loading and option module support software)		
Floppy disk drive	1 unit or more (required to install software by FD)		
CD-ROM drive	1 unit or more (required to install software by CD-ROM)		
Ethernet (10BASE-T)	1 port or more (required to connect a PC with the ET.NET module)		
Serial (D-sub 9-pin)	1 port or more (required to connect the PCs with a PC by RS-232C or set an IP address for the ET.NET module)		
PC card (conforming to the PC Card Standard (JEITA V4.2) TYPE II or TYPE III)	1 slot or more (required to connect a PC with the parallel interface module (LWZ400). At this time, the following GP-IB card is also required.) GP-IB card: PCMCIA-GPIB (Model: 777438-02) (manufactured by National Instruments Corporation)		
Display	Resolution of 800 × 600 pixels or more		
Microsoft® Internet Explorer	Version 4.01 or later		

(*1) For the OS service pack, refer to the attached reference materials for software.

(*2) No.10 and No.28 in <Table of Systems Supported by Windows® 2000 and Windows® XP> in “PREFACE” are excepted.

(*3) This is a capacity required to install each system. A free capacity to save user programs is also required.

<Hardware other than PC>

- CPU for HITACHI-S10 α series (2 α)
- Power supply for HITACHI-S10 α series
- Backboard for HITACHI-S10 α series
- Connection cable between the personal computer and PCs
- Remote I/O stations, other power supplies and backboards, cards, and wiring as required

NOTE

Users of this product require knowledge of the Windows® environment and user interface. The CPMS loading system conforms to the Windows® standard. This manual is intended for users who have mastered the basic usage of Windows®.

NOTE FOR PERSONAL COMPUTER SETTING

When you use a personal computer with the suspend function, disable the function. The personal computer may malfunction if the suspend function remains enabled during execution of the CPMS debugger system.

THIS PAGE INTENTIONALLY LEFT BLANK.

2 INSTALLATION

2 INSTALLATION

2.1 Installing the System (*)

First, check if your CD is correct.

To install each system, double-click the Setup.exe file saved in the DISK1 folder of the system CD. After installing it, an installed program window is not displayed.

To install each system, install Microsoft® Internet Explorer 4.01 or later. If it is not installed, install each system after installing it.

NOTE

- To operate each system, install Microsoft® Internet Explorer 4.01 or later. If it is not installed, each system does not operate normally.
- Before installing each system, be sure to terminate such a program residing in the memory as virus monitoring software. If each system is installed without terminating the program, an error may occur. In this case, uninstall the system by referring to “2.2 Uninstalling the System” and terminate all Windows® programs. Then, install each system once again.
- To install and uninstall each system by using Windows® 2000, set “Administrator” or “Member of Administrators” as the user account to be logged on.
- To install and uninstall each system by using Windows® XP, set “Computer administrator” as the user account to be logged on. If “Account with limitations” is set, each system does not operate normally.

(*) No.10 and No.28 in <Table of Systems Supported by Windows® 2000 and Windows® XP> in “PREFACE” are excepted.

2.2 Uninstalling the System (*)

To uninstall each system for version-up, observe the following procedure.

(1) Uninstalling from Windows® 95 or Windows® 98

Open [Settings] in the [Start] menu – [Control Panel]. Double-click [Add/Remove Programs], select “Each System” by the [Install/Uninstall] tab, and click the button. When the [Confirm File Deletion] window is displayed, click the button.

(2) Uninstalling from Windows® 2000

Open [Settings] in the [Start] menu – [Control Panel]. Double-click [Add/Remove Programs], click [Change or Remove Programs], select “Each System,” and click the button. When the [Confirm File Deletion] window is displayed, click the button.

(3) Uninstalling from Windows® XP

Open ([Settings] –) [Control Panel] in the [Start] menu. Double-click [Add or Remove Programs], click [Change or Remove Programs], select “Each System,” and click the button. When the [Confirm File Deletion] window is displayed, click the button.

When a shortcut of each system executable file has been created on the desktop, etc. delete this shortcut.

NOTE

- When the [Remove Shared File?] window is displayed while each system is uninstalled on Windows®, click not to delete the shared file.
- To install and uninstall each system by using Windows® 2000, set “Administrator” or “Member of Administrators” as the user account to be logged on.
- To install and uninstall each system by using Windows® XP, set “Computer administrator” as the user account to be logged on.
- If the [Add/Remove Programs] window is locked (inoperable) when each system is uninstalled by using Windows® 2000, log off from [Shut Down] in the [Start] menu of Windows®, and then log on again on the [Log On to Windows] window.

(*) No.10 and No.28 in <Table of Systems Supported by Windows® 2000 and Windows® XP> in “PREFACE” are excepted.

2 INSTALLATION

2.3 Starting Up the System (*)

- (1) The system to be installed by each system is automatically registered in the [Start] menu of Windows®. From this [Start] menu, select [Programs (All Programs)] – [Hitachi S10] – “Each System” to start the system.

If the logged-on user name in installing each system is different from the user name in starting each system, each system is not displayed in the [Start] menu. In this case, create a shortcut of the executable file (extension .exe) for each system shown below and then double-click this shortcut to start each system.

<Executable File Storage Directory Table>

No.	System name	Type	Executable file storage directory (*1)	Executable file name
1	S10Tools SYSTEM	S-7890-01	C:\Hitachi\S10	S10Ladder.exe
				S10Tool.exe
2	LADDER CHART SYSTEM	S-7890-02	C:\Hitachi\S10\2ALDC	S10Ladder.exe
3	HI-FLOW SYSTEM	S-7890-03	C:\Hitachi\S10\HF	S10Tool.exe
4	CPMS LOADING SYSTEM	S-7890-04	C:\Hitachi\S10\CPMS	Cpms.exe
5	CPMSE LOADING SYSTEM	S-7890-05	C:\Hitachi\S10\CPMSE	Cpmse.exe
6	CPMS DEBUGGER SYSTEM	S-7890-06	C:\Hitachi\S10\DEBUG	Debugger.exe
7	CPMSE DEBUGGER SYSTEM	S-7890-07	C:\Hitachi\S10\DEBUGE	DebuggerE.exe
8	GP-IB LOADING SYSTEM	S-7890-08	C:\Hitachi\S10\GPIB	Gpib.exe
9	BACKUP RESTORE SYSTEM	S-7890-09	C:\Hitachi\S10\BACKUP	SysAllSaveLoad.exe
10	NX/Tools-S10 SYSTEM	S-7890-13	C:\Hitachi\S10\NX	NXTool.exe
11	4 α LADDER CHART SYSTEM	S-7890-17	C:\Hitachi\S10\4ALDC	S10Ladder_4A.exe
12	4 α H LADDER CHART SYSTEM	S-7890-18	C:\Hitachi\S10\4AHLDC	S10Ladder_4AH.exe
13	LADDER COMMENT CONVERTER SYS	S-7890-19	C:\Hitachi\S10\CFCONV	Cfconv.exe
14	HIGH SPEED REMOTE I/O SYSTEM	S-7890-21	C:\Hitachi\S10\HISRIO	HiSpeedRIO.exe
15	CPU LINK SYSTEM	S-7890-22	C:\Hitachi\S10\CPULINK	CpuLink.exe
16	4ch ANALOG PULSE COUNTER SYS	S-7890-23	C:\Hitachi\S10\ANALOG	AnalogPuls.exe
17	EXTERNAL SERIAL LINK SYSTEM	S-7890-24	C:\Hitachi\S10\EXLINK	ExLink.exe
18	S10ET LINK SYSTEM	S-7890-25	C:\Hitachi\S10\ETLINK	EtherNet.exe
19	J.NET SYSTEM	S-7890-27	C:\Hitachi\S10\JNET	JNet.exe
20	OD.RING/SD.LINK SYSTEM	S-7890-28	C:\Hitachi\S10\ODRING-SDLINK	ODRing.exe
21	ET.NET SYSTEM	S-7890-29	C:\Hitachi\S10\ETNET	Et_Net.exe
22	FL.NET SYSTEM	S-7890-30	C:\Hitachi\S10\FLNET	FLnet.exe
23	D.NET SYSTEM	S-7890-31	C:\Hitachi\S10\DNET	DNet.exe
24	LADDER CHART MONITOR SYSTEM	S-7890-34	C:\Hitachi\S10\2ALDCM	S10LadderM.exe
25	HI-FLOW MONITOR SYSTEM	S-7890-35	C:\Hitachi\S10\HFM	S10ToolM.exe
26	IR.LINK SYSTEM	S-7890-36	C:\Hitachi\S10\IRLINK	IrLink.exe

(*1) Directory name when “C” is the drive name of installing destination.

(*) No.10 and No.28 in <Table of Systems Supported by Windows® 2000 and Windows® XP> in “PREFACE” are excepted.

- (2) The [CPMS LOADING SYSTEM] window is displayed, showing that the CPMS loading system has been started up. Perform operation according to the guidance.

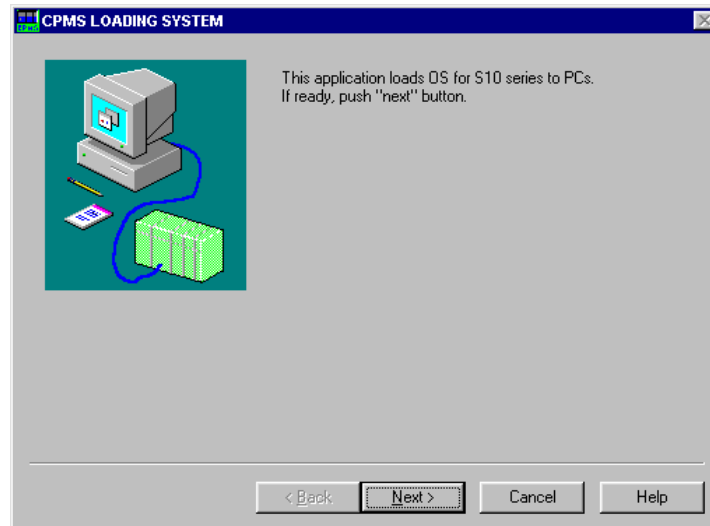


Figure 2-1 [CPMS LOADING SYSTEM] Window

2.4 Terminating the System

The CPMS loading system terminates automatically after CPMS transfer has been completed.

THIS PAGE INTENTIONALLY LEFT BLANK.

3 COMMANDS

3 COMMANDS

3.1 Command System

The CPMS loading command system is shown below.

This command is described in Section 3.2.

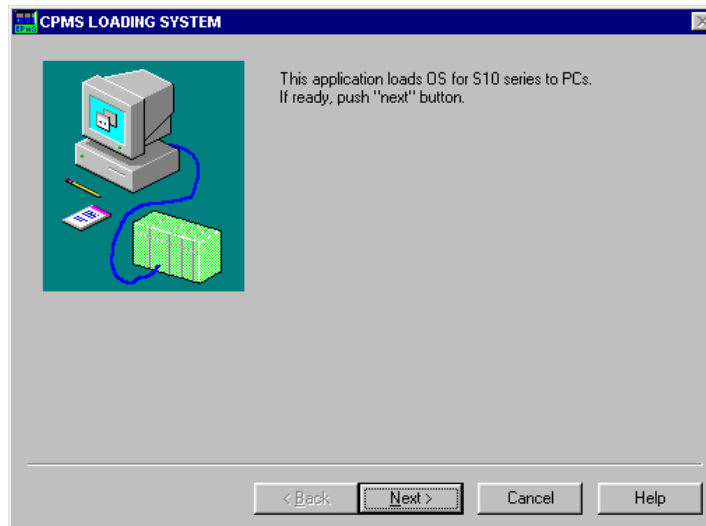
Command — Transfer CPMS

3.2 Transferring CPMS

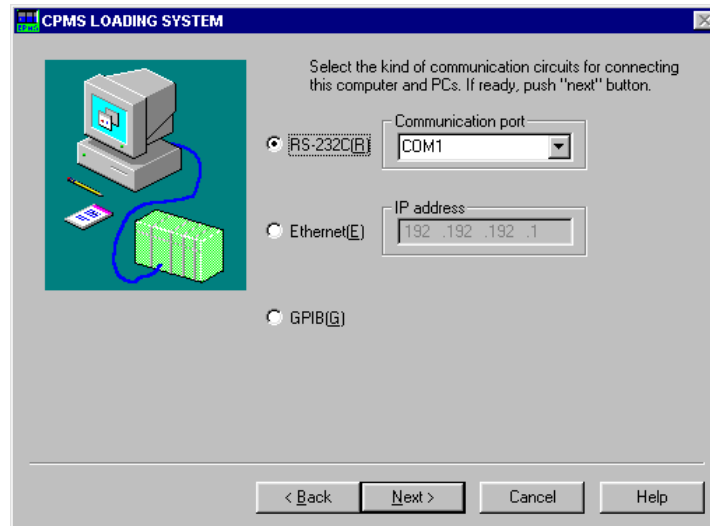
Function: Transfers the CPMS to the PCs.

Operation: See the operation procedure below.

- (1) Click the button on the [CPMS LOADING SYSTEM] window.



- (2) The [CPMS LOADING SYSTEM] window (communication type) is displayed. Select the communication type and click the **Next** button.



- (3) The [CPMS LOADING SYSTEM] window (memory clearance) is displayed. To transfer the CPMS to the PCs, select the desired memory clearance method and click the **Next** button. If it need not be transferred, click the **Cancel** button.

