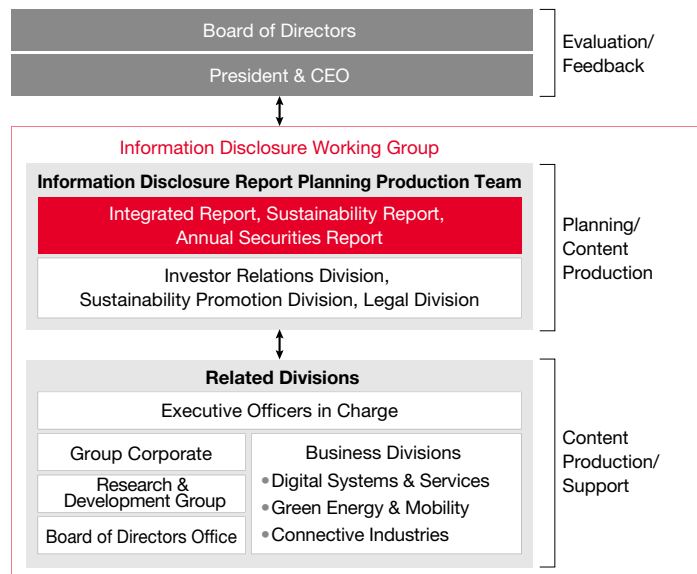


## Editorial Policy / Our Reporting Universe

**Editorial Policy** The Hitachi Integrated Report is compiled for the purposes of facilitating a deeper understanding among stakeholders of Hitachi's business model, as well as a dialogue through which we can further enhance corporate value and realize a virtuous cycle of value co-creation. In the 2024 edition, we focus on Hitachi's management strategies and measures to become a digital-centric Social Innovation Company based on our value creation process. This integrated report consists of three parts: "Value Creation" to achieve further growth for Hitachi, "Business Sustainability" to support the growth, and "Corporate Governance" as the instrumental in enhancing corporate value. In editing this report, we referred to the IFRS Foundation's International Integrated Reporting Framework and the Japanese Ministry of Economy, Trade and Industry's Guidance for Collaborative Value Creation.

### Production Structure



### Reporting Scope

Period: Fiscal 2023 (April 1, 2023–March 31, 2024)

Note: Includes activities and other information occurring after April 1, 2024.

Companies: Hitachi, Ltd., and its consolidated subsidiaries

Accounting Standard: Unless otherwise noted, this report is prepared in accordance with U.S. GAAP through fiscal 2013 and with the International Financial Reporting Standards (IFRS) from fiscal 2014.

### Disclaimer Regarding Forward-looking Statements

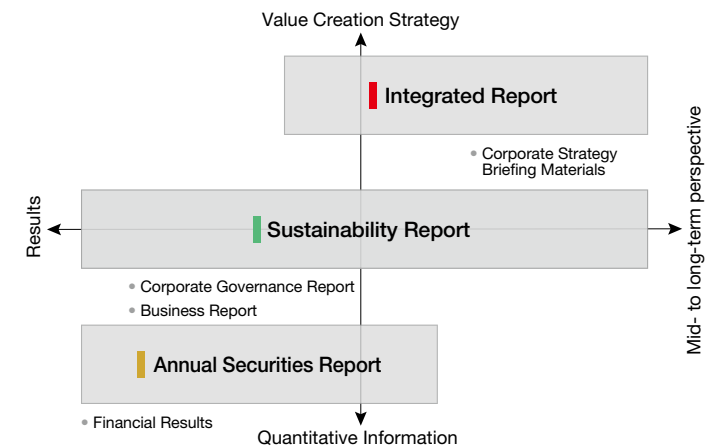
Certain statements regarding the future of the Company set forth in this Report might constitute "forward-looking statements," such as "plan," "forecast," "target," and "strategy." Although forward-looking statements contained in this report are based upon what the Company has determined to be reasonable assumptions at the time of disclosure, actual performance and other results could differ materially from those anticipated in such statements.

\*All company names and product names are the trademarks or registered trademarks of their respective companies.

### Our Reporting Universe

Hitachi publishes three corporate reports: the Integrated Report, the Sustainability Report, and the Annual Securities Report. We define each report's roles by content (from quantitative information to Value Creation Strategy) and time horizon (from results to the medium- to long-term perspective).

In particular, the Integrated Report and the Sustainability Report, which are released on the same day, can be read together to confirm ESG initiative progress and data in addition to management strategies. We also invite you to visit our websites for additional information.



#### Integrated Report [↗](#)



**Readership**  
Institutional investors and other stakeholders

#### Sustainability Report [↗](#)



**Readership**  
ESG investors and other stakeholders

#### Annual Securities Report [↗](#)



**Readership**  
Shareholders and investors

### Website

[Corporate Strategy](#)  
[\(Mid-term Management Plan\)](#) [↗](#)

[Financial Information](#) [↗](#)

[Hitachi Investor Day](#) [↗](#)

[Business Report](#) [↗](#)

[Corporate Governance Report](#) [↗](#)

[Information Security Report](#) [↗](#)

[IT Performance Report](#) [↗](#)

[ESG Policies and Guidelines](#) [↗](#)

[Dialogue with Stakeholders](#) [↗](#)

[About the Hitachi Group](#) [↗](#)