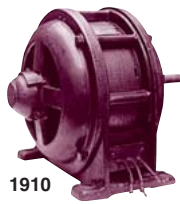


HISTORY HIGHLIGHTS

- 1910**
- Founded by Namihei Odaira as an electrical repair shop
 - Succeeded in manufacturing three 5-HP (3.6775-kW) electric motors as the company's first products



1910

- 1915**
- Completed 10,000-HP (7,355-kW) water turbine

- 1924**
- Completed the first large-scale DC electric locomotive to be manufactured in Japan



1924

- 1931**
- Completed 10,000-A hydraulic electrolytic cell

- 1932**
- Completed Hitachi's first electric refrigerator

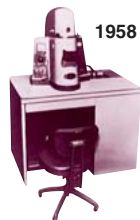
- 1943**
- Completed 85,000-kW Francis water turbine and 70,000-kVA alternating current generator

- 1952**
- Completed 21,000-kW two-stage pump-turbine

- 1954**
- Completed the first large-scale cold strip mill to be produced in Japan

- 1955**
- Completed 100,000-kW Francis water turbine and 93,000-kVA alternating current generator

- 1958**
- Electron microscope awarded the grand prix at the World Exposition in Brussels



1958

- 1959**
- Completed electronic computers based on transistors
 - Hitachi America, Ltd. established

- 1961**
- Completed experimental nuclear reactor

- 1964**
- Completed the first cars for the Shinkansen (bullet train)
 - Manufactured monorail running between Haneda Airport and Hamamatsu-cho, Tokyo

- 1968**
- Developed hybrid LSI
 - Developed 300-m/min elevators for high-rise buildings

- 1969**
- Completed on-line banking system
 - Developed and mass-produced all-transistor color televisions

- 1970**
- Developed computer-aided traffic control system for the Shinkansen (bullet train)



1970

- 1973**
- Developed new-type image pickup tube

- 1974**
- Commercial operation began at Japan's first 460,000-kW nuclear power station
 - Released the first series of general-purpose large-scale computers



1974

- 1975**
- Developed Hitachi High Crown Control Mill

- 1978**
- Completed world's first field emission electron microscope with record-high resolution
 - Experimental color camera with solid-state miniature image device developed

- 1982**
- Hitachi Europe Ltd. established
 - Succeeded in world's first micro-level observation of magnetic field by the use of electron beam holography
 - Listed on New York Stock Exchange

- 1984**
- Started mass production of 256-kbit DRAMs

- 1985**
- Completed the "JT-60" large-scale Tokamak device for break-even plasma experiments
 - Established the Hitachi Foundation to promote cultural, educational and scientific exchanges between Japan and the U.S.

- 1988**
- Hitachi Asia Pte. Ltd. established

- 1989**
- Developed world's fastest superconductive computer
 - Developed superconductive MR imaging equipment
 - Established two R&D centers in the U.S. and two laboratories in Europe

- 1990**
- Released very large-scale computer with the world's fastest processing speed at that time

- 1991**
- Developed inverter-controlled electric locomotive with the world's largest control capacity
 - Developed highly sensitive image pickup tubes



1991

- 1993**
- Developed Shinkansen (bullet train) with new maximum service speed of 270 km/h
 - Developed capillary array DNA sequencer

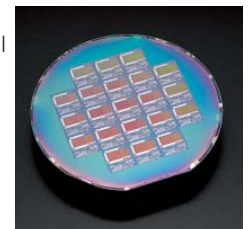
- 1994**
- Hitachi (China), Ltd. established
 - Developed the original 32-bit RISC processor SuperH family

- 1995**
- Developed Super TFT LCD module featuring ultra-wide viewing angles
 - Developed 10-Gbit/s fiber-optic transmission equipment



1995

- 1998**
- Developed 320-Gbit/s optical data transmission system
 - Developed the experimental 128-Mbit single-electron memory



1998

- 1999**
- Established dependable autonomous hard real-time management technology

- 2000**
- Developed 52.5-Gbit/in² perpendicular magnetic recording method

- 2001**
- Developed Notary and Certificate Authority systems for e-government
 - Developed mobile web-gateway system
 - Developed application processor for mobile phones

- 2002**
- Developed world's first silent water-cooling notebook PC
 - Developed world's smallest 0.3-mm square contactless IC chip
 - Developed compact DNA analysis system genetic for SNP typing

2002



- 2003**
- Developed and commercialized compact, highly accurate, high-speed finger vein authentication system
 - Successful measurement of infant brain functions using optical topography
 - Dr. Hideaki Koizumi, a Hitachi Fellow, presented a lecture at the 400th Anniversary of the Foundation of the Pontifical Academy of Sciences, Vatican City



2003

- 2004**
- Developed world's smallest sensor-net terminal with a battery life of over one year
 - Developed high-temperature lead-free solder paste

- 2005**
- Explosives Trace Detection System received U.S. TSA certification
 - Exhibited two-wheel mobile robot "EMIEW" capable of direct dialogue at the 2005 World Exposition Aichi, Japan
 - Established Hitachi (China) Research & Development Corporation

2005



- 2006**
- Confirmation of electro-luminescence phenomena on injection of electrical current in ultra-thin silicon film
 - Basic experiment on the application of Optical Topography as a brain-machine interface
 - Mass production of 2.5-inch HDD using perpendicular magnetic recording technology

- 2007**
- Prototype of world's smallest noncontact RFID powder IC chip (dimensions 0.05 mm × 0.05 mm)
 - Prototype of the 2-Mbit non-volatile SPRAM chip using magnetization reversal by spin injection
 - Developed EMIEW 2, a small and lightweight interactive robot

FINANCIAL HIGHLIGHTS (consolidated)

Net Sales		Millions of yen	
Year	2006	2007	2008
	9,464,801	10,247,903	11,226,735

Net Income (loss)		Millions of yen	
Year	2006	2007	2008
	37,320	(32,799)	(58,125)

Capital Investment		Millions of yen	
Year	2006	2007	2008
	954,706	1,048,572	969,087

Overseas Sales		Millions of yen	
Year	2006	2007	2008
	3,639,645	4,154,276	4,742,239

Years ended March

TRADEMARKS

name	explanation	page
Intel	Intel is a registered trademark of Intel Corporation in the U.S. and other countries.	29
Xeon	Xeon is a registered trademark of Intel Corporation in the U.S. and other countries.	29
MATLAB	MATLAB is a registered trademark of The MathWorks, Inc.	39
Simulink	Simulink is a registered trademark of The MathWorks, Inc.	39
TargetLink	TargetLink is a registered trademark of dSPACE GmbH in the United States or other countries, or both.	39
iPod	iPod is a trademark of Apple Inc., registered in the U.S. and other countries.	42
acTVila	acTVila is a trademark of ActVila Corporation.	48
Blu-ray Disc	Blu-ray Disc and the logo are trademarks.	49
MULTOS	MULTOS is a trademark of MAOSCO Limited.	60
Windows	Windows is a registered trademark of Microsoft Corporation in the U.S. and/or other countries.	60
AIX	AIX is a registered trademark of International Business Machines Corporation in the U.S., other countries, or both.	63
UNIX	UNIX is a registered trademark of The Open Group in the U.S. and other countries.	63
Itanium	Itanium is a registered trademark of Intel Corporation in the U.S. and other countries.	63
HP-UX	HP-UX is a product name of Hewlett-Packard Company.	63
Linux	Linux is a registered trademark of Linus Torvalds in the U.S. and other countries.	63
Pentium	Pentium is a trademark of Intel Corporation in the U.S. and other countries.	63
Microsoft	Microsoft is a registered trademark of Microsoft Corporation in the U.S. and/or other countries.	63
Windows Server	Windows Server is a registered trademark of Microsoft Corporation in the U.S. and/or other countries.	63
Red Hat	Red Hat is a registered trademark of Red Hat, Inc. in the U.S. and other countries.	63
Red Hat Enterprise Linux	Red Hat Enterprise Linux is a registered trademark of Red Hat, Inc. in the U.S. and other countries.	63
PowerPoint	PowerPoint is a registered trademark of Microsoft Corporation in the U.S. and/or other countries.	64
Ethernet	Ethernet is a registered trademark of Xerox Corporation.	68
Windows Media	Windows Media is a registered trademark of Microsoft Corporation in the U.S. and/or other countries.	82

* Other company and product names in this booklet may be trademarks or registered trademarks of their respective owners.

ISSN 0018-277X

HITACHI TECHNOLOGY is published annually by Hitachi, Ltd. as a special issue of the web magazine HITACHI REVIEW.

Visit our site at <http://www.hitachi.com/rev/>

Address correspondence to: The Editor, HITACHI REVIEW, Advertising Dept., Corporate Communications Div., Hitachi, Ltd.

Akihabara Daibiru Building, 18-13, Soto-Kanda 1-chome, Chiyoda-ku, Tokyo, 101-8608 Japan

Editor-in-Chief: Atsushi Ogiwara

©2008 Hitachi, Ltd.

Date of Issue: July, 2008

Printed in Japan by Hitachi Intermedix Co., Ltd.

XX-E322